

FORTUNE 500 HEADQUARTERS  
Professional Sports Teams  
4TH LARGEST U.S. REGION  
**2023** Business Expansion RELOCATIONS  
**PROFILE** Most Diverse Economy in TX  
#1 FASTEST GROWING REGION IN U.S.  
**NORTH TEXAS**  
Growth DIVERSITY IN INDUSTRY  
Major Colleges and Universities  
**LABOR FORCE** DIRECT INTERNATIONAL  
Parks and Recreation FLIGHTS  
**ARTS AND CULTURE**  
13 COUNTIES | 150+ CITIES | 9,000 SQ. MILES

AMERICA'S SWEET SPOT

RAPIDLY GROWING

Museums

HIGH QUALITY OF LIFE

**4<sup>TH</sup> LARGEST REGION IN THE U.S.**

**NORTH TEXAS GROWS BY**

**1 PERSON  
EVERY 3.3 MINUTES**

**18 PEOPLE AN HOUR | 429 PEOPLE A DAY | 3,015 A WEEK**

**13** COUNTIES

**9000** SQUARE MILES

**150+** CITIES

**7.7** MILLION PEOPLE

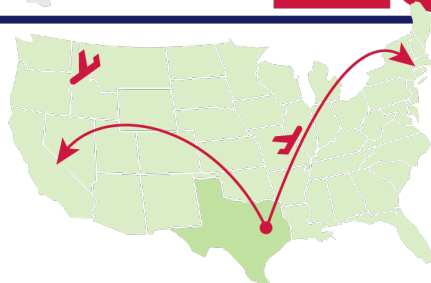
IF NORTH TEXAS WERE A STATE, WE'D BE

**13<sup>TH</sup> IN GDP**  
BETWEEN MASSACHUSETTS (12)  
AND VIRGINIA (14)

IF NORTH TEXAS WERE A COUNTRY, WE'D BE

**23<sup>RD</sup> IN GDP**  
BETWEEN SWEDEN (22)  
AND POLAND (24)

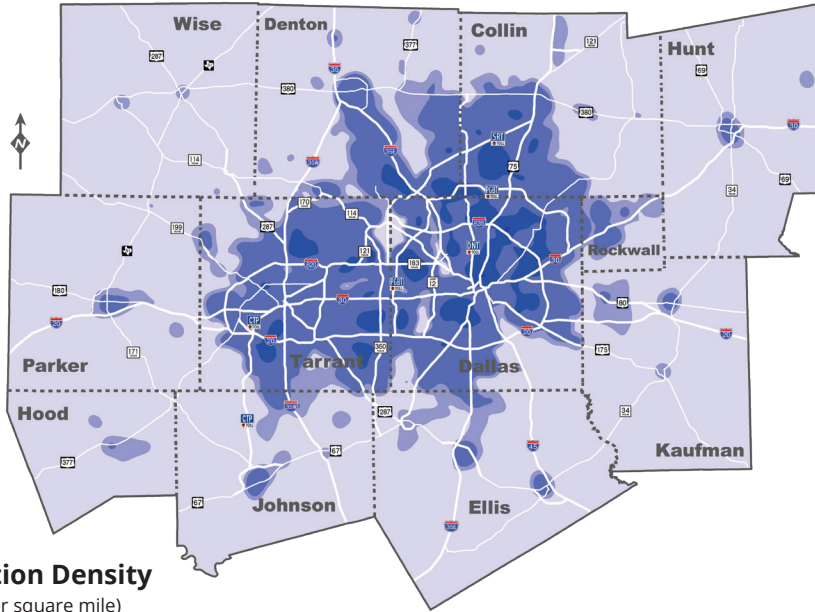
**4 HOURS  
FLYING**



**FROM EITHER  
COAST**

# The Breakdown

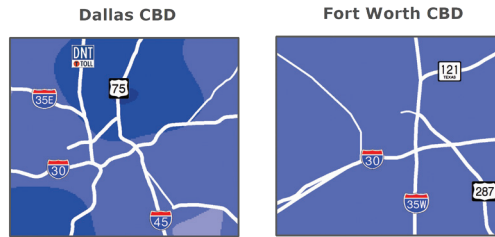
## POPULATION DENSITY



**Population Density**  
(Persons per square mile)



Source: 2018 North Central Texas Council of Governments Demographic Forecast



## LARGEST CITIES

No.	City	Population
1	Dallas	1,304,379
2	Fort Worth	918,915
3	Arlington	394,266
4	Plano	285,494
5	Irving	256,684
6	Garland	246,018
7	Frisco	200,509
8	Grand Prairie	196,100
9	McKinney	195,308
10	Mesquite	150,108
11	Denton	139,869
12	Carrollton	133,434
13	Richardson	119,469
14	Lewisville	111,822
15	Allen	104,627
16	Flower Mound	75,956
17	Mansfield	72,602
18	North Richland Hills	69,917
19	Rowlett	62,535
20	Euless	61,032

Source: 2020 U.S. Census Bureau Estimates

## NORTH TEXAS POPULATION GROWTH ESTIMATES

**10,001,371**  
2030

**12,890,587**  
2040

**16,768,007**  
2050



## Education Level for North Texas Workforce

**40.3%** } of the 25-and-over population in the Dallas-Fort Worth-Arlington metro area has a bachelor's degree or higher



High School Diploma or Equivalent



Some College or Associate Degree



Bachelor's Degree

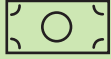


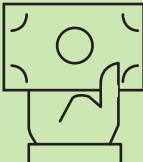
Post-Graduate Degree

Source: U.S. Census Bureau (2018)

# Diversity in Industry

## MAJOR INDUSTRIES IN NORTH TEXAS

  
**\$534.8 Billion**  
North Texas GDP

**30%**  
of the  
State's GDP 

**Most Diverse**  
Economy in Texas

 **15**  
**Cities**  
Population  
Over 100K

  
**#1** Fastest Growing  
Region in the U.S.

**8.1%**  
**Job Growth Rate**  
Outpaces the Nation's 4.02%


  
**6<sup>th</sup> Largest**  
Economy by GDP in the U.S.

## HEALTH CARE

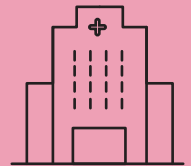
 **6 Nobel**  
**Laureates**

**2<sup>nd</sup> Largest**  
Industry Sector  
in North Texas

  
**\$52 Billion**  
Gross Medical Services

  
**15%**  
of the North Texas Economy

 **6 Hospitals**  
with Level 1  
Trauma Facilities



## ENERGY

  
**107,650**  
Permanent Jobs

  
**8**  
**Fortune 1,000**  
**Companies**  
in Energy

Atmos Energy  
Energy Transfer Equity  
EnLink Midstream  
ExxonMobil  
HollyFrontier  
Pioneer Natural Resources  
Range Resources  
Vista Energy

  
**Only State**  
with an  
Independent Power Grid

## AVIATION

**900 Companies**  
in Aerospace  
& Defense  
Highest Concentration Worldwide

  
**DFW International Airport**  
World's **4<sup>th</sup>** Busiest Airport  
for Passengers  
World's **3<sup>rd</sup>** Busiest Airport  
for Operations

**7 Runways**  
**5 Terminals**  
**164 Gates**  
DFW International Airport

**75 Million**  
Annual Passengers at  
DFW International Airport  
\*Pre-Pandemic Level

**Largest Global Airline**  
American Airlines  
**Largest Domestic Airline**  
Southwest Airlines

**Home to the World's**  
**1st Industrial Airport**  
Alliance Airport

# Diversity in Industry

## FINANCIAL & REAL ESTATE

334,990

Financial Labor Force

3 of Top 10

Largest Banks in Texas  
Comerica, Independent Bank,  
& Texas Capital Bank



The Fed

Dallas is Home to the 11th District  
Federal Reserve Bank Headquarters



75,562 Jobs

in North Texas Real Estate



17%

North Texas Economic  
Output is Real Estate



231 Million

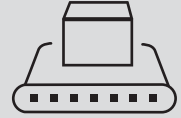
Square Feet of Rentable  
Office Space

## MANUFACTURING



\$61.9 Billion

Manufacturing GDP  
for North Texas



94.6%

of All Texas Exports are  
Manufactured Goods

## LOGISTICS



\$22 Billion

Transportation & Warehousing  
GDP for North Texas

Tower 55

is the Busiest Railroad  
Intersection West of the  
Mississippi River



14,361 Miles

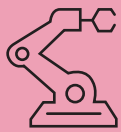
of Rail in Texas,  
2nd Largest in the U.S.



971,000 Tons

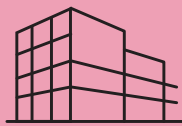
of Air Cargo Annually Through  
DFW International Airport

## HIGH TECH



35%

of Texas' High Tech Jobs



3,000+

High Tech Firms in North Texas



5th

Highest Concentration  
of Tech Workers in the U.S.



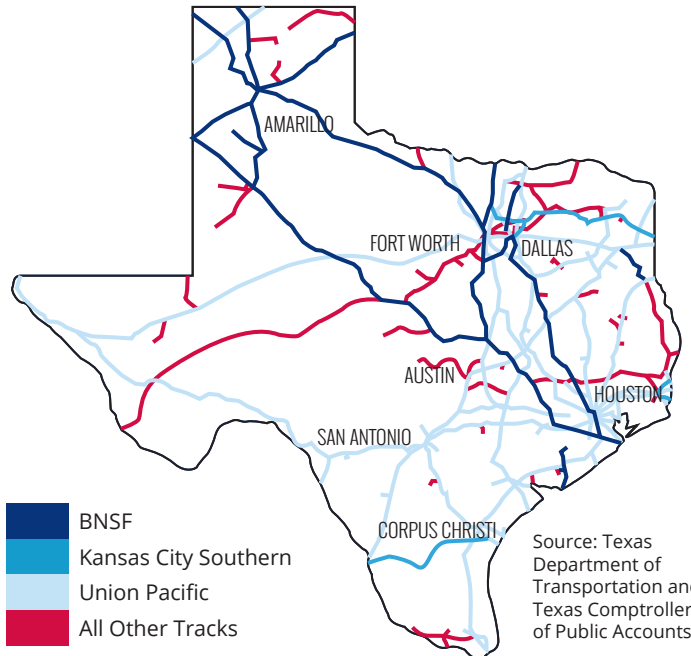
Home to the

U.S. Patent &  
Trademark Office

for the Texas Region

155

Coworking, Incubators  
& Accelerators, and Innovation  
Centers



# Map

## MAJOR COLLEGES AND UNIVERSITIES

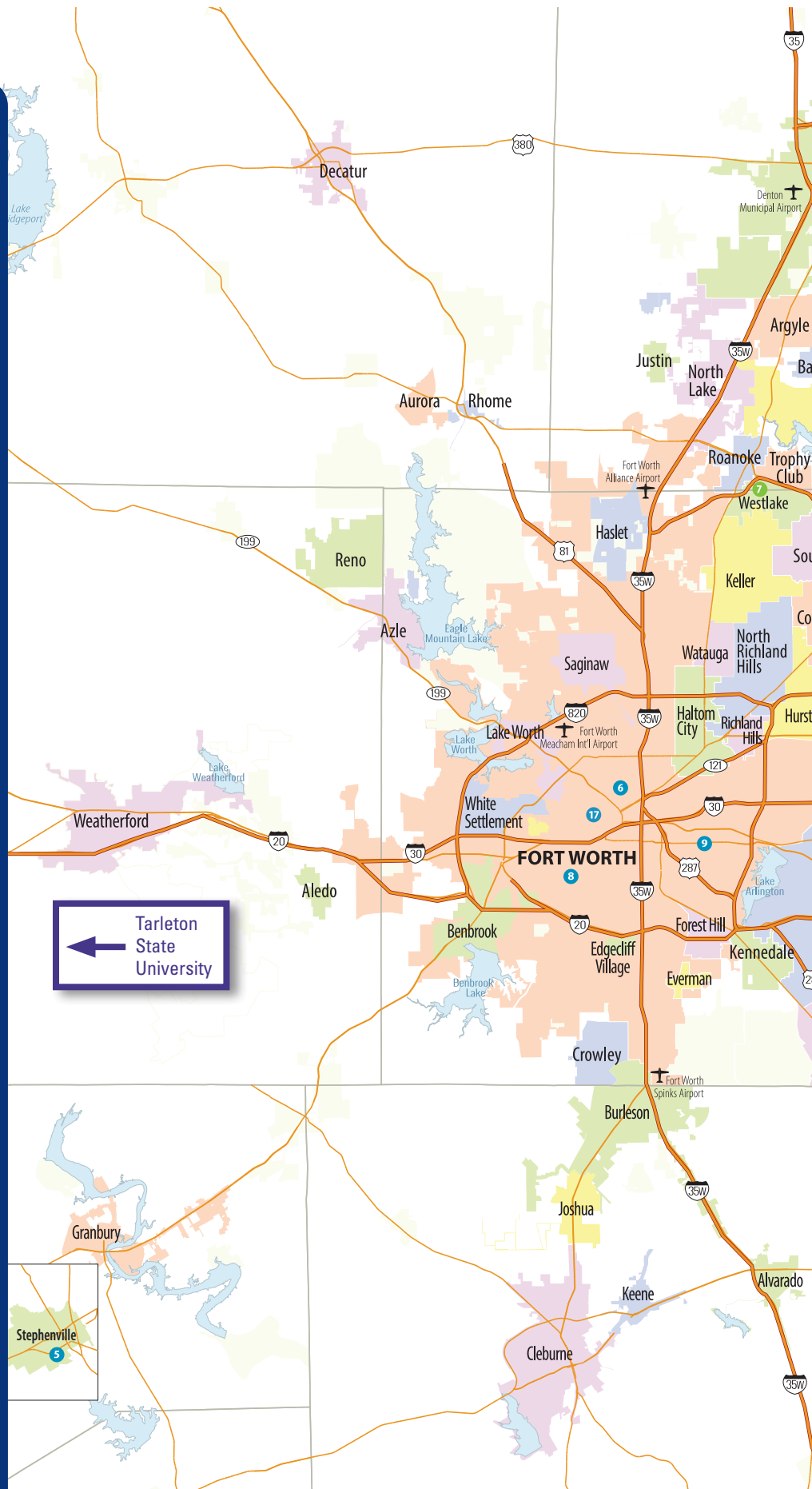
- 1 Collin College\*
- 2 Dallas Baptist University
- 3 Dallas College\*
- 4 Southern Methodist University
- 5 Tarleton State University
- 6 Tarrant County College\*
- 7 Texas A&M University-Commerce
- 8 Texas Christian University
- 9 Texas Wesleyan University
- 10 Texas Woman's University
- 11 The University of Texas at Arlington
- 12 The University of Texas at Dallas
- 13 The University of Texas Southwestern Medical Center
- 14 University of Dallas
- 15 University of North Texas
- 16 University of North Texas at Dallas
- 17 University of North Texas Health Science Center

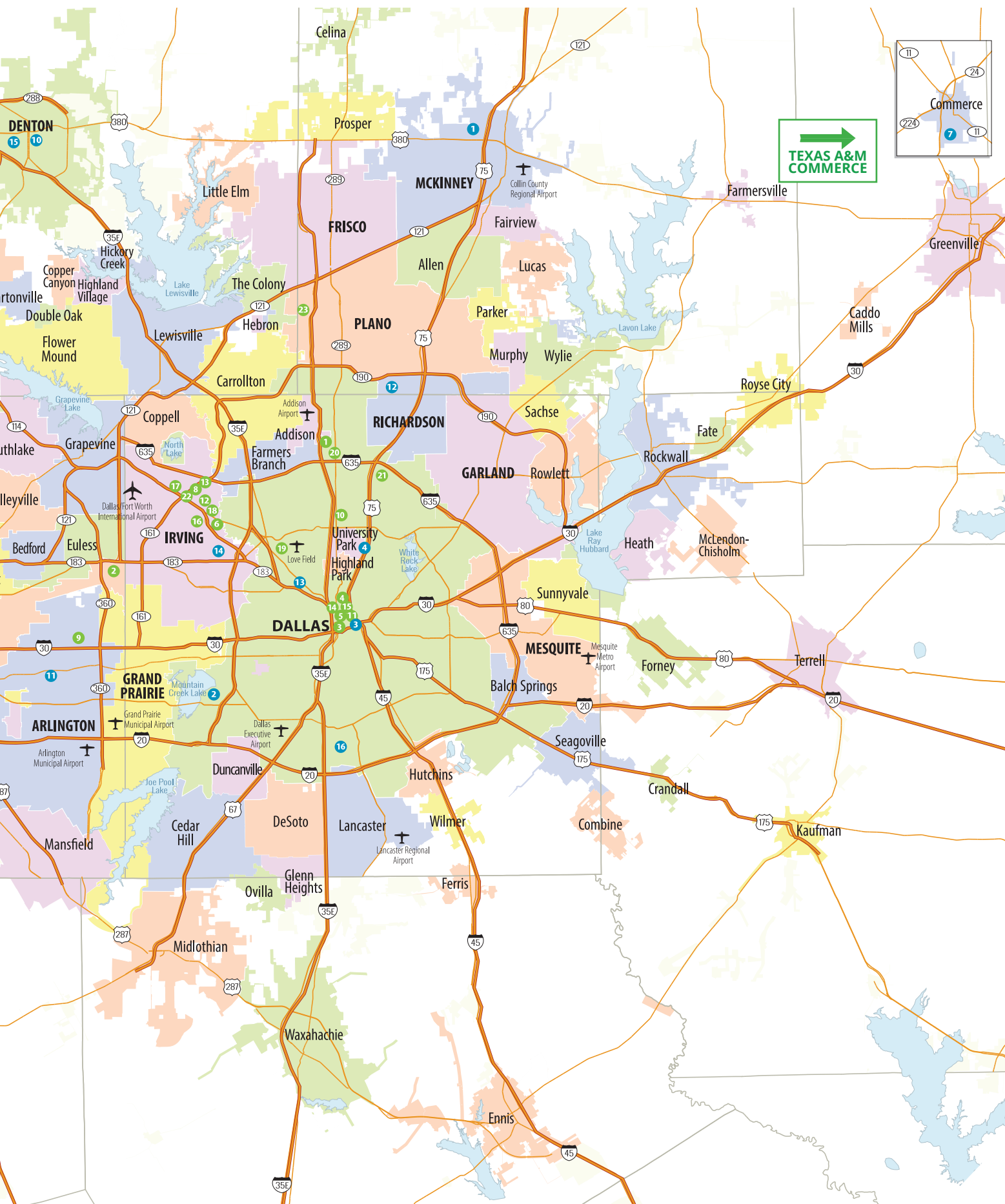
\*Denotes main campus

## FORTUNE 500 HEADQUARTERS\*

- 1 AECOM
- 2 American Airlines Group
- 3 AT&T
- 4 Builders FirstSource
- 5 CBRE Group
- 6 Celanese
- 7 Charles Schwab
- 8 Commercial Metals
- 9 D.R. Horton
- 10 Energy Transfer
- 11 EnLink Midstream
- 12 Exxon Mobil
- 13 Flour
- 14 HF Sinclair
- 15 Jacobs Engineering
- 16 Kimberly-Clark
- 17 McKesson
- 18 Pioneer Natural Resources
- 19 Southwest Airlines
- 20 Tenet Healthcare
- 21 Texas Instruments
- 22 Vistra Energy
- 23 Yum China Holdings

\*2022 Fortune 500 list. Listed in alphabetical order.





# NORTH TEXAS Business

## FORTUNE 500 COMPANIES IN NORTH TEXAS

No.	Company	City	Revenue (Millions)
6	Exxon Mobil	Irving	\$285,640.0
9	McKesson	Irving	\$181,502.0
13	AT&T	Dallas	\$168,864.0
54	Energy Transfer	Dallas	\$67,417.0
114	American Airlines Group	Fort Worth	\$29,882.0
124	D.R. Horton	Arlington	\$27,774.2
126	CBRE Group	Dallas	\$27,746.0
176	Builders FirstSource	Dallas	\$19,893.9
181	Tenet Healthcare	Dallas	\$19,485.0
182	Kimberly-Clark	Irving	\$19,440.0
188	Charles Schwab	Westlake	\$18,996.0
197	HF Sinclair	Dallas	\$18,389.1
198	Texas Instruments	Dallas	\$18,344.0
234	Southwest Airlines	Dallas	\$15,790.0
248	Pioneer Natural Resources	Irving	\$14,643.0
259	Flour	Irving	\$14,156.8
260	AECOM	Dallas	\$14,112.4
262	Jacobs Engineering	Dallas	\$14,092.6
315	Vistra Energy	Irving	\$12,077.0
359	Yum China Holdings	Plano	\$9,853.0
406	Celanese	Irving	\$8,537.0
484	Commercial Metals	Irving	\$6,729.8
485	EnLink Midstream	Dallas	\$6,685.9

Source: Fortune 2022

NORTH TEXAS  
RANKS AMONG THE

**TOP 3**

U.S. METRO AREAS

FOR BUSINESS EXPANSION,  
RELOCATIONS  
& EMPLOYMENT GROWTH

OVER

**\$1**  
**TRILLION**  
TOTAL REVENUE

FROM NORTH TEXAS  
FORTUNE 500 COMPANIES

## LARGEST U.S. METROPOLITAN AREAS

No.	Metro Area	Population	GDP	Labor Force	Fortune 500
1	New York-Newark-Jersey City	20,140,470	\$1,809,323,397,000	9,645,357	62
2	Los Angeles-Long Beach-Anaheim	13,200,998	\$1,007,037,066,000	6,677,579	11
3	Chicago-Naperville-Elgin	9,618,502	\$692,988,237,000	4,802,282	35
<b>4</b>	<b>Dallas-Fort Worth-Arlington</b>	<b>7,708,190</b>	<b>\$534,807,251,000</b>	<b>4,138,885</b>	<b>23</b>
5	Houston-The Woodlands	7,122,240	\$488,164,627,000	3,480,007	24
6	Washington D.C.-Arlington-Alexandria	6,385,162	\$561,027,941,000	3,371,864	16
7	Philadelphia-Camden-Wilmington	6,245,051	\$439,055,118,000	3,055,401	13
8	Miami-Fort Lauderdale	6,138,333	\$365,051,489,000	3,161,958	10
9	Atlanta-Sandy Springs-Roswell	6,089,815	\$425,443,807,000	3,145,423	17
10	Boston-Cambridge-Newton	4,941,632	\$480,307,073,000	2,787,455	15

Source: U.S. Census Bureau 2020 Population Estimates, Fortune 2022



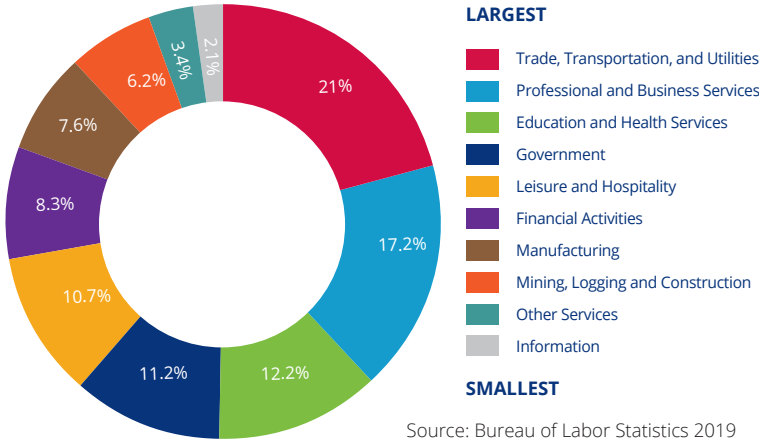
# NORTH TEXAS Labor & Trade

THE NORTH TEXAS LABOR FORCE IS  
OVER **4 MILLION STRONG**

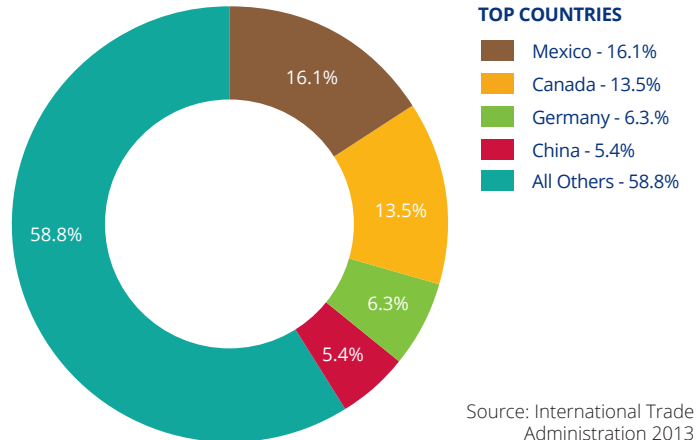
**8<sup>TH</sup> LARGEST**  
EXPORT MARKET IN THE U.S.

**\$19.6B**  
IN TOTAL MERCHANDISE EXPORTS

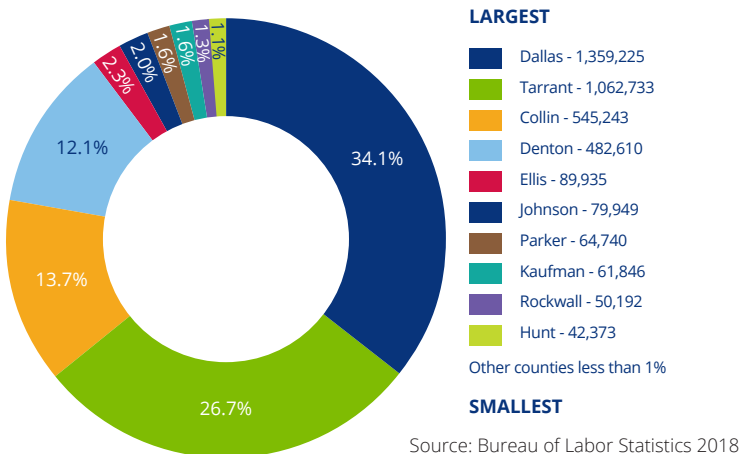
## NORTH TEXAS LABOR FORCE BY INDUSTRY



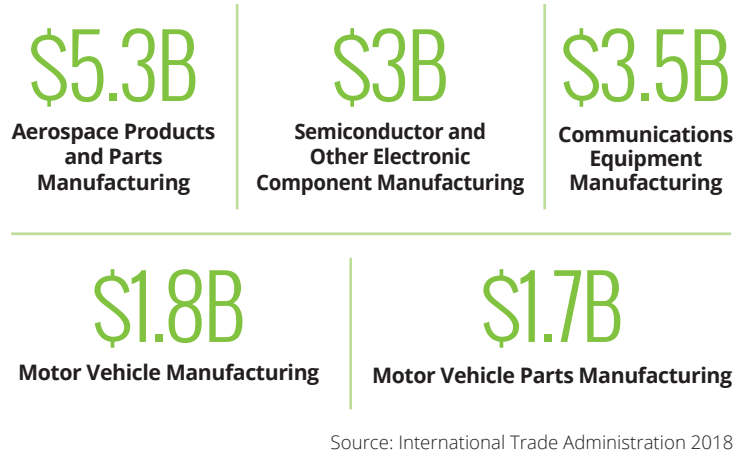
## NORTH TEXAS EXPORTS | TOP TRADE AGREEMENT RECEIVERS



## NORTH TEXAS LABOR FORCE BY COUNTY



## NORTH TEXAS EXPORTS | TOP INDUSTRIES



## FOREIGN TRADE ZONES IN NORTH TEXAS

**FTZ. NO. 39**  
DALLAS/FORT WORTH

**Grantee/Operator:**  
DFW International Airport Board  
P.O. Drawer 619428  
DFW Airport, TX 75261  
(972) 973-4649  
Fax (972) 574-8069

**FTZ. NO. 113**  
ELLIS COUNTY

**Grantee/Operator:**  
Ellis County Trade Zone Corporation  
P.O. Box 788  
Midlothian, TX 76065  
(972) 723-5522

**FTZ. NO. 168**  
DALLAS/FORT WORTH

**Grantee:**  
Metroplex International Trade  
Development Corp.  
**Operator:**  
Foreign Trade Zone Operating Co. of Texas  
P.O. Box 613307, Dallas, TX 75261  
(972) 929-7220 x225  
Fax (972) 929-7228

**FTZ. NO. 196**  
FORT WORTH

**Grantee:**  
Alliance Corridor, Inc.  
c/o Hillwood Development Corporation  
13600 Heritage Pkwy.  
Suite 200  
Fort Worth, TX 76177  
(817) 224-6050  
Fax (817) 224-6060

# Quality of Life

## Education



**33** Colleges  
And Universities

**113** School Districts

**58** Public  
Charter Schools

### 10 Largest Universities in North Texas

The University of Texas at Arlington	45,949
University of North Texas	42,372
The University of Texas at Dallas	29,698
Texas Woman's University	16,326
Tarleton State University	14,016
Southern Methodist University	12,385
Texas A&M University-Commerce	11,624
Texas Christian University	11,938
Dallas Baptist University	5,156
University of North Texas at Dallas	4,230

### North Texas Community Colleges

Dallas College	160,000
Collin College	59,278
Tarrant County College	49,108
North Central Texas College	10,525

Source: Education Service Centers Regions 10 & 11

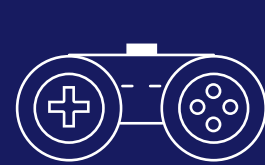
## Non-Profits



North Texas is home to  
**29%**  
of the state's non-profits  
(the most in the state)



## 15 Professional Sports & E-Sports Teams



**DALLAS COWBOYS**  
National Football  
League



**DALLAS MAVERICKS**  
National Basketball  
Association



**DALLAS STARS**  
National Hockey League



**FC DALLAS**  
Major League Soccer



**TEXAS RANGERS**  
Major League Baseball

**ALLEN AMERICANS**  
ECHL

**DALLAS FUEL**  
Overwatch League

**DALLAS RATTLERS**  
Professional Lacrosse League

**DALLAS ROUGHNECKS**  
American Ultimate  
Disc League

**DALLAS SIDEKICKS**  
Major Arena Soccer League

**DALLAS WINGS**  
Women's National  
Basketball Association

**FRISCO ROUGHRIDERS**  
Minor League Baseball

**LONE STAR BRAHMAS**  
North American Hockey League

**DALLAS JACKALS**  
Major League Rugby

**TEXAS AIRHOGS**  
American Association of Independent  
Professional Baseball

**TEXAS LEGENDS**  
NBA  
Development League

**PGA of America**  
Professional Golf Association  
Headquarters

## Affordable Housing



\$247,000

Median home sales price  
7th lowest price of top  
20 U.S. metro areas

## Texas Flavor



76

Breweries



61

Wineries

## Culture



124

Museums



6,000

Annual Arts &  
Cultural Events



Largest

Contiguous Urban  
Arts District

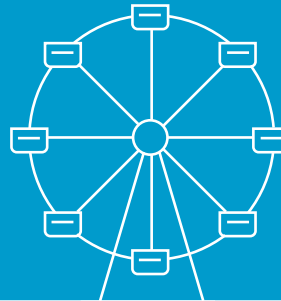
in the U.S. is the  
Dallas Arts District

## Visitors



48.9M

people visit annually



2.2M

annually attend  
the Texas State Fair  
America's Biggest Fair

## Recreation



234

Sunny Days  
or Partly Sunny Days Per Year



2,000

Public Parks  
covering 94,700 acres



60

State Parks  
within 100 miles of North Texas



180+

Golf Courses  
public and private



60

Lakes & Reservoirs  
covering 550,500 acres



1,000

Miles of off-street trails  
for cyclists and pedestrians



2

World-Class Zoos  
ranked in the top 50  
in the U.S.

## ABOUT THE NORTH TEXAS COMMISSION

For more than 50 years, the North Texas Commission has been convening regional leaders and stakeholders to build a better future for all North Texans. Our genesis is rooted in the development of DFW International Airport, and throughout the years we've been instrumental in regional transportation initiatives, the Superconducting SuperCollider, the North Texas Super Bowl and launched the regional leadership program, Leadership North Texas and LNT University, a professional development program for Millennials.

Today we market North Texas internationally and domestically, we advocate for issues with no city or county boundary and we foster collaboration. The North Texas Commission is a non-profit organization with a membership base of local governments, education institutions, and the business community.

## MAJOR INVESTORS

ActivePure  
AECOM  
Airbnb  
Aledo ISD  
Alliance Operating Services  
Amazon  
American Airlines, Inc.  
ASTERRA  
AT&T  
Atmos Energy Corporation  
Aurora  
Bank of America  
Bell  
Berkshire Hathaway Energy  
Blue Cross and Blue Shield of Texas  
BNSF Railway Company  
Boeing Company  
Capital One  
Carrington Coleman  
Cedar Hill EDC  
Central Market / H-E-B  
Charter Communications  
Children's Health System of Texas  
Cisco Systems, Inc.  
City of Allen  
City of Arlington  
City of Carrollton  
City of Dallas  
City of Denton  
City of Farmers Branch  
City of Fort Worth  
City of Frisco  
City of Granbury  
City of Grand Prairie  
City of Irving  
City of Lewisville  
City of Mansfield  
City of McKinney  
City of Mesquite  
City of North Richland Hills  
City of Plano  
City of Richardson  
City of The Colony  
Coca-Cola Southwest Beverages  
Collin College  
Columbia Strategic Consulting Group  
Cooksey Communications, Inc.  
Corgan

CORE Construction  
Dallas Area Rapid Transit  
Dallas Business Journal  
Dallas College  
Dallas County  
Dallas Cowboys Football Club  
Dallas ISD  
Denton County  
Denton ISD  
DFW International Airport  
Eagle Mountain - Saginaw ISD  
Fidelity Investments  
Fort Worth ISD  
Freese and Nichols, Inc.  
Frisco ISD  
Frost Bank  
Hillwood Properties  
HNTB Corporation  
Huckabee, Inc.  
Huitf-Zollars, Inc.  
Jackson Walker LLP  
Liberty Mutual Insurance  
Lockheed Martin  
Match Group  
Mbroh Engineering, Inc.  
Mesquite ISD  
Molson Coors beverage company  
North Texas Municipal Water District  
North Texas Tollway Authority  
NTE Mobility Partners  
Oncor Electric Delivery  
Oppenheimer & Co.  
Pacheco Koch, a Westwood company  
Paycom  
Raise Your Hand Texas  
Raytheon Technologies  
Reliant, an NRG company  
Rios Group, Inc. (The)  
Sewell Automotive Companies  
Stantec  
Tarleton State University  
Tarrant County  
Tarrant County College  
Tarrant Regional Water District  
Texans Can Academies  
Texas A&M University-Commerce  
Texas Health Resources

Texas Instruments Incorporated  
Texas Mutual Insurance  
Texas Retired Teachers Association  
The Rios Group  
The Salvation Army of North Texas  
Town of Flower Mound  
Toyota Motor North America, Inc  
Trinity Metro  
Trinity River Authority  
Union Pacific Railroad  
United Educators Association  
University of Texas at Arlington (The)  
University of North Texas System  
Upper Trinity Regional Water District  
UT Southwestern Medical Center  
VLK Architects



Leading The Region's Advocacy.

## MISSION

The North Texas Commission is a public-private partnership dedicated to advancing the vibrancy of the North Texas Region.

## NTC TEAM

### President & CEO

Chris E. Wallace

### Chief Administrative Officer

Dawn Miller

### Chief Operating Officer

Patrick Brophay

### Vice President, Communications & Issue-Based Advocacy

Ashley Mergele

### Project Manager

Caitlyn Sartin

### Director, State Relations

Christopher Lee

### Stakeholder Relations Manager

José Carreon

### Director, Leadership & Diversity Programs

Linda Valdez Thompson

### Communications Counsel & Strategy, ABI, Inc.

Kayleigh Maddie

### Policy Advisor, Education Workforce Development

Dr. Charles Luke

### Policy Advisor, Transportation & Infrastructure

Rebecca Montgomery

### Senior Policy Advisor

Former Representative Jim Keffer

### Executive Director, Interlink

Candy Slocum

## CONTACT US

### North Texas Commission

P.O. Box 610246 | DFW Airport, TX 75261

(972) 621-0400 | [www.ntc-dfw.org](http://www.ntc-dfw.org)

[ntc@ntc-dfw.org](mailto:ntc@ntc-dfw.org)